

647 Editorial

COLUMNS

648 What's New

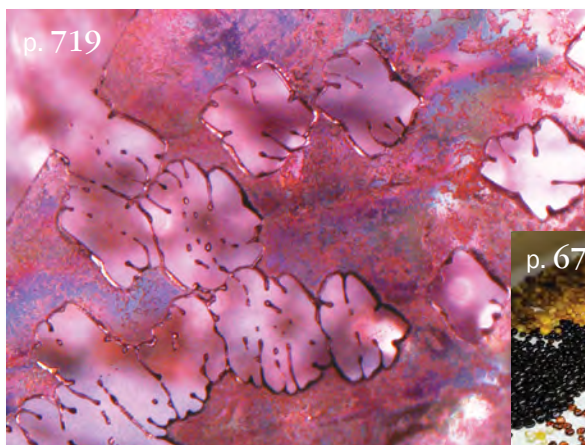
Gemlogis Taupe Diamond Segregator | M-Screen melee screening device | Presidium Synthetic Diamond Screener | Spekwin32 software | CIBJO coral book | Global diamond industry 2015 | Flux-grown synthetic spinel | *ICGL Newsletter* | ISO standards for diamonds | *The Journal's* cumulative index | Rare books scanned by GIA | Responsible practices and jewellery consumption | RJC 2015 progress report

652 Practical Gemmology

The Kerez effect in green tourmaline

654 Gem Notes

Apatite from Mozambique | Chondrodite from Tanzania | Purple garnets from East Africa | Green prase opal from Tanzania | Trapiche ruby from Myanmar | Sapphires from Kenya | Shattuckite and bisbeeite from the DRC | Purple tourmaline from Mozambique | Tourmaline slices from Myanmar | Wurtzite from Tanzania | Star zircon | Amber processing in Lithuania | Shungite | Gem-set cultured pearls



ARTICLES

678 From Exsolution to 'Gold Sheen': A New Variety of Corundum

By Thanh Nhan Bui, Katerina Delioui, Tanzim Khan Malik and Katrien De Corte

692 Age Determination of Zircon Inclusions in Faceted Sapphires

By Klemens Link

702 Identification of a CVD Synthetic Diamond with a 'Tree Ring' Growth Pattern

By Yan Lan, Rong Liang, Taijin Lu, Yong Zhu, Tianyang Zhang, Xuan Wang, Jian Zhang, Hong Ma and Zhonghua Song

712 Conferences

Canadian Gemmological Association | First World Emerald Symposium | Gem-A | Geological Society of America

721 Gem-A Notices

735 Learning Opportunities

738 New Media

743 Literature of Interest

746 Volume Index



Cover Photo:

This 5.86 ct intense reddish purple garnet was cut by Jeff White from rough material that was mined in Mozambique; see Gem Note on pp. 656–658. Photo by Jeff White.

The Journal is published by Gem-A in collaboration with SSEF and with the support of AGL.

