

Additional figures to accompany the article:

Fritsch E. and Ivey J., 2018. Bumble Bee Stone: A bright yellow-to-orange and black patterned gem from West Java, Indonesia. *Journal of Gemmology*, **36**(3), 228–238, <http://doi.org/10.15506/JoG.2018.36.3.228>.



Figure DD-1: This specimen of BBS shows very large orbicular patterns (without sawing or polishing). Photo by Joel Ivey.



Figure DD-2: This is an example of the original BBS material found, with rather straight layers and much less attractive colours than the material produced later. Yet, this was unusual enough to trigger further exploration. Photo by Joel Ivey.

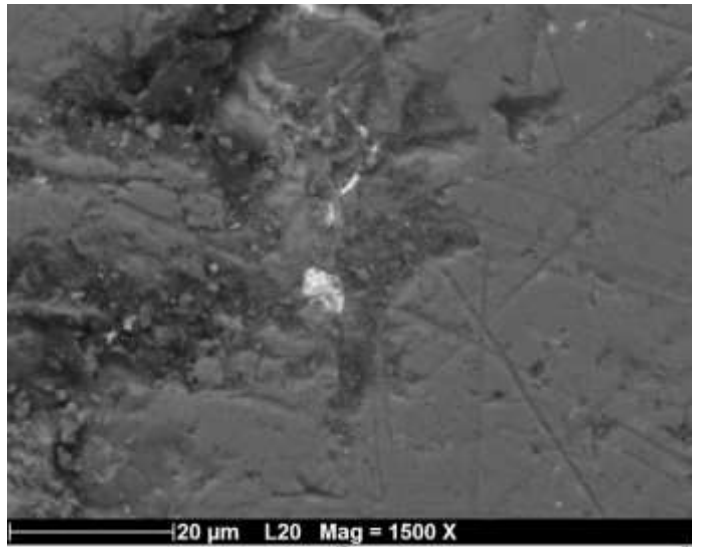
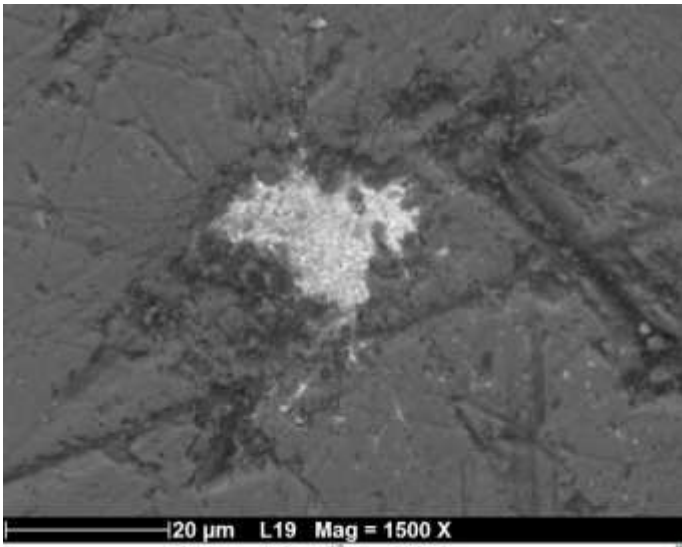


Figure DD-3: Viewed with backscattered electrons (making the heavier elements appear whiter), these inclusions of pararealgar in BBS show a powdery, porous appearance. Micrographs by E. Fritsch.



Figure DD-4: This is an example of extremely porous BBS. Photo by Joel Ivey.