



# GemA

The Gemmological  
Association of  
Great Britain

# PROSPECTUS

## 2024-2025

OMNEMQUE • PRETIOSUM • LAPIDEM

# 115 YEARS OF EXCELLENCE

Gem-A, The Gemmological Association of Great Britain, is the world's longest established provider of gem and jewellery education. Our prestigious Gemmology and Diamond Diplomas are globally recognised as qualifications of the highest status. Our Gemmology Diploma, taught in five languages and in 19 countries around the world, is the direct descendant of the gem course that was proposed for the UK jewellery trade in 1908.

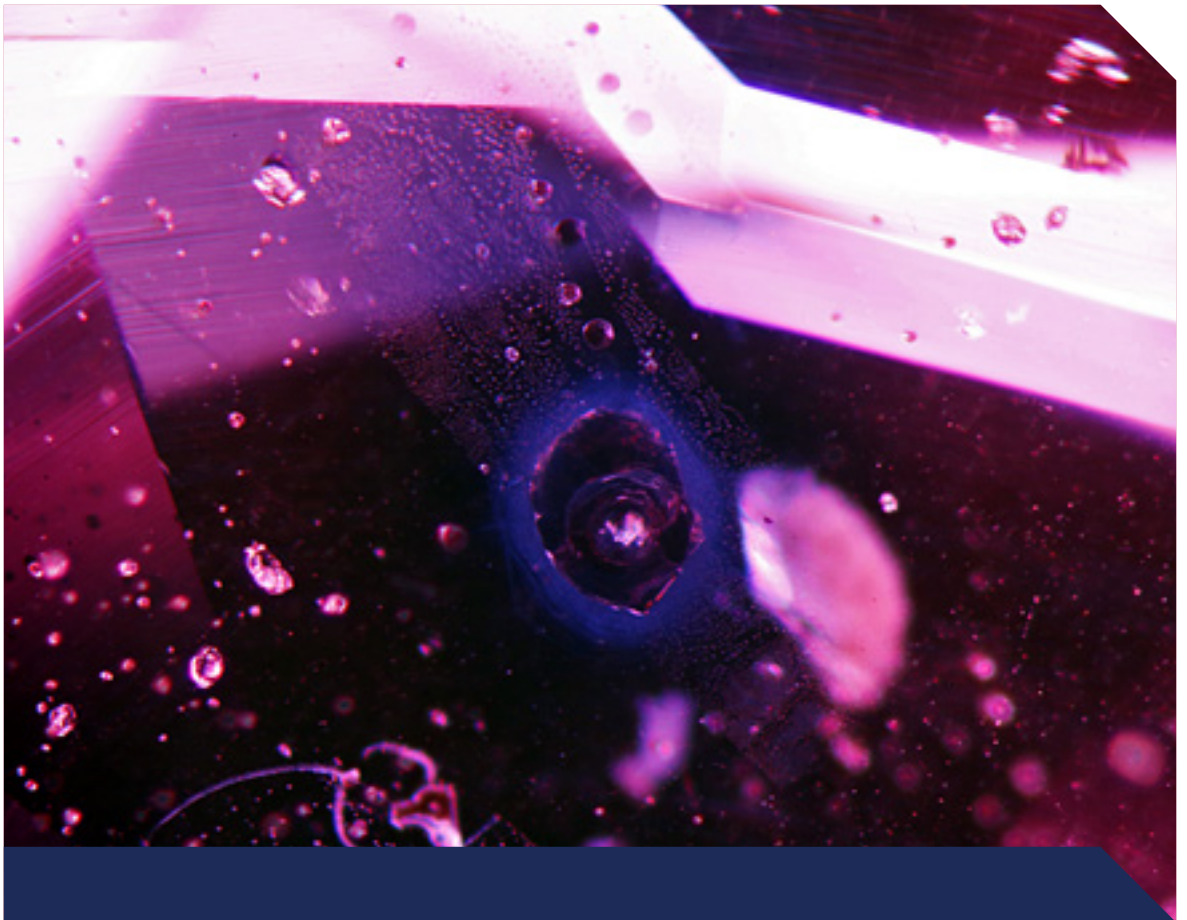
Today Gem-A forms an international community of gem professionals and enthusiasts. With our commitment to high educational standards, we serve the interests of the gem and jewellery industries and support gemmological research worldwide. In addition to our educational programmes we also provide membership, including the world-famous FGA and DGA Memberships, as well as events and an annual Conference. Members receive our two internationally distributed publications, *Gems&Jewellery* and *The Journal of Gemmology*.

Our on-site shop, Gem-A Instruments, provides quality gemmological equipment for students and the trade.

Gem-A's Ely Place headquarters is located next to Hatton Garden.

# CONTENTS

115 years of excellence	2
<b>FOUNDATION AND DIPLOMA COURSES</b>	<b>4</b>
Gemmology Foundation	5
Gemmology Diploma	9
Diamond Diploma	13
<b>SHORT COURSES</b>	<b>17</b>
GemIntro	18
Diamond Grading and Identification Course	20
<b>STUDY WITH US ON-SITE IN LONDON</b>	<b>22</b>
Studying on-site	23
On-site Dates and Prices	25
<b>STUDY WITH US ONLINE</b>	<b>27</b>
Online Distance Learning (ODL)	28
GAPPs	29
Online Dates and Prices	31
<b>STUDY WITH US ABROAD</b>	<b>33</b>
Accredited Teaching Centres	34
<b>FURTHER STUDY</b>	<b>37</b>
BSc in Gemmology & Jewellery Studies	38
BSC Dates and Prices	41
FEEG Diploma	42
FEEG Dates and Prices	43
<b>GEM-A STUDENT SERVICES</b>	<b>44</b>
Services offered	45
Student Membership	46
Gem-A Graduation and Presentation of Awards	47
Gem-A Instruments	49
Terms & Conditions	51
Examinations	53
Location	54



# FOUNDATION AND DIPLOMA COURSES

---

If you are looking to start a career within the gems and jewellery industry or are interested in gemmology, our GemINTRO course or the Gemmology Foundation course would be the perfect starting point. Our Gemmology and Diamond Diplomas are internationally recognised and enable successful students to apply to join the Association and become FGA and/or DGA Members.

# GEMMOLOGY FOUNDATION

---

Our Gemmology Foundation course is ideal for those keen to get the best start in their gemstone education. If you are passionate about gemstones or simply want to gain an understanding of gemmology to enhance your career in the gem trade, this course is for you. Studying the Foundation is essential for those who want to go on to study our Gemmology Diploma and gain FGA Membership status — a symbol of knowledge, excellence and integrity in the trade.

## Career options

Our Gemmology Foundation is the perfect starting point for a career in gemstones. If you want to work in the trade then sign up today.

After completing the Gemmology Foundation, students can go directly into careers in the trade, such as buying, selling or auctioning, but will find it advantageous to their knowledge and professional standing to complete the Gemmology Diploma and apply for Membership of Gem-A, allowing them to use the letters FGA after their names — a symbol of knowledge, excellence and integrity in the trade.

## Further study

- **Gemmology Diploma**, leading to eligibility for FGA Membership status
- **Diamond Diploma**, leading to eligibility for DGA Membership status
- **BSc in Gemmology & Jewellery Studies** (requires successful completion of Gemmology Foundation, Gemmology Diploma and Diamond Diploma)

**Once completed you will be able to identify, test and handle a wide variety of gemstones — useful skills if you are handling gems on a daily basis.**

## At a glance

### Course level

Ofqual level 4

### Study options

On-site • ODL • ATC

### Qualification

Gem-A Level 4 Certificate in Gemmology

*(Graduates can use Cert. GA status)*

### Entry requirements

English qualification, e.g. IELTS Academic (Level 7) or TOEFL (score of 95-120)\*

*\* Applies to on-site and ODL study. Only required if English is not your first language.*

### Assessment

#### ➤ Assessed coursework

Four online assessments.

#### ➤ Examinations

Two examination papers combining theory and practical.

#### ➤ Practical endorsement

For on-site/ATC students this will be covered as part of your course tuition. For ODL students this can be completed by attending a Foundation lab class — completion essential.

## Course content

### The Foundation course covers:

- What defines a gemstone, how to identify common gem materials confidently, and the properties and uses of a range of gem materials.
- Applying this knowledge of gemstone properties to their proper care and commercial use, including gemstone fashioning and uses in jewellery.
- An understanding of value and price factors as they relate to gemstones.
- How to handle rough, cut and set gem materials, such as diamond, sapphire, ruby and emerald, in a professional and confident manner.
- An understanding of a range of organic gem materials and the common treated, synthetic, and imitation gem material seen in the trade.
- How to use basic gemmological equipment and report accurately on the various observations and results of tests conducted on gemmological specimens.
- The origin and formation of gemstones and the various stages of the gemstone pipeline from mining to retail.
- How to compare and contrast features and properties of gem materials, treatments and synthetics and to distinguish between, and correctly identify, gemstones.

## Course materials

### Students receive:

- Fully illustrated Foundation course notes\*
- Foundation practical workbook
- Portable instrument kit, including:  
10× loupe, tweezers, stone cloth, spectroscope, dichroscope, Maglite, flat light, folding polariscope, conoscope, Chelsea Colour Filter and zip case
- Foundation stone set containing 20 rough and cut study specimens.

\* Chinese Traditional/Simplified, French and Japanese course notes are also available to purchase. Contact the Education department ([education@gem-a.com](mailto:education@gem-a.com)) for prices.



## Gemmology Foundation lab class (ODL students only)

All ODL Gemmology Foundation students are required to attend a Gemmology Foundation endorsement/lab class to ensure that they are using equipment safely and correctly, and to handle a range of stones beyond those supplied with the course. Students can attend a lab class in the UK, or may arrange a class with a GAPP centre (see page 29).

All on-site and ODL Foundation students are provided with study stones and portable instrument kit at the start of their course. This enables students to familiarise themselves with the instruments at home prior to the lab class, and complete some of the practical elements.

Students should bring all course equipment and their workbook to the lab class.

### The lab class will cover:

- ▶ Observation using the 10× loupe and microscope and the various lighting techniques for looking at gem materials.
- ▶ Correct use of the refractometer for faceted materials and the interpretation of results.
- ▶ Use of the handheld spectroscope and how to record and interpret results.
- ▶ Utilisation of supporting tools such as the polariscope, dichroscope, Chelsea Colour Filter and UV light.
- ▶ The theory and practice of hydrostatic specific gravity tools.
- ▶ Weight estimation of mounted/set gemstones.

The course will also cover a review of the requirements for the practical aspects of the Foundation practical examination.

**“The Foundation lab class is superb; it cements together the practical elements of the Foundation in preparation for the exam.”**

Jason Kercher, Gemmology Foundation  
(ODL) student



# GEMMOLOGY DIPLOMA

---

Our Gemmology Diploma is the most prestigious gemmological qualification in the gem and jewellery trade. You will look at a wider range of gems, synthetics and treatments, and will build upon the practical and theoretical knowledge learned during your Gemmology Foundation course, leading to a more in-depth understanding of gemmology and the principles of gem testing and enhanced gem identification skills.

Angular colour zoning in sapphire.

## Career options

Our graduates go on to successful careers in a number of areas in the trade, such as buying, selling, auctioning or valuing gems and jewellery.

Gemmology Diploma graduates must apply for Membership of Gem-A in order to continue to use the letters FGA after their name — a sign of excellence in the trade.

## Further study

- **Diamond Diploma**, leading to eligibility for DGA Membership status
- **BSc in Gemmology & Jewellery Studies** (requires successful completion of Gemmology Foundation, Gemmology Diploma and Diamond Diploma)
- **FEEG Diploma**

**Graduates of the Gemmology Diploma can apply for Fellowship of Gem-A, allowing them to use the letters FGA after their name. FGA Membership status conveys a student's knowledge, integrity, membership of a professional body and commitment to professional development, and is highly valued within the trade.**

## At a glance

### Course level

Ofqual level 6

### Study options

On-site • ODL • ATC

### Qualification

Gem-A Level 6 Diploma in Gemmology

*(Graduates become eligible to apply for Fellowship of Gem-A, allowing them to use FGA status)*

### Entry requirements

- Successful completion of Gem-A's Gemmology Foundation course.
- English qualification, e.g. IELTS Academic (Level 7) or TOEFL (score of 95-120).\*

*\*Applies to on-site and ODL study. Only required if English is not your first language.*

### Assessment

#### Theory component:

- **Assessed coursework**  
Four online assessments.
- **Examinations**  
Two examination papers combining theory and practical, plus one practical exam.

#### Practical component:

- **Practical endorsement**  
For on-site/ATC students this will be covered as part of your course tuition. For ODL students this can be completed by attending a Diploma lab class — completion essential.

## Course content

**Building on from the knowledge gained during the Gemmology Foundation, the Gemmology Diploma course covers:**

- An in-depth look at treatments and synthetic materials, including their production, use, identification and the resulting implications for the gem trade.
- The ethical, environmental, and technological implications and applications of gemmology.
- How to select, organise and present relevant information using professional and technical vocabulary.
- How to interpret results from advanced gem-testing equipment.
- Confidence in applying scientific principles and concepts in solving problems relating to gemmology, and to assess the validity, reliability and credibility of scientific information related to gemmology.
- The ability to demonstrate a logical approach to gem testing, and the capability to acknowledge limitations and uses of certain tests.

## Course materials

**The Diploma course materials build upon those received in the Foundation course. You will receive:**

- Comprehensive Diploma course notes\*
- Practical handbook and workbook
- Diploma stone set containing 20 rough and cut study specimens.
- Refractometer with RI liquid and monochromatic light source (London on-site and ODL students only)

**ALL ODL STUDENTS ALSO RECEIVE A TRAVEL MICROSCOPE.**

*\* Chinese Traditional/Simplified, French and Japanese course notes are also available to purchase. Contact the Education department ([education@gem-a.com](mailto:education@gem-a.com)) for prices.*



## Gemmology Diploma lab class (ODL students only)

All ODL Gemmology Diploma students are required to attend a Diploma lab class — a gemmology practical endorsement — in order to complete the Gemmology Diploma. It is important that all students gain experience and guidance in the practical aspects of gem testing — this is vital to understanding the theory aspects of the Diploma course and is an integral component of studying gemmology. The Diploma lab class provides ODL students with the opportunity to familiarise themselves with a wide range of gem materials and gem testing techniques that will enable them to accurately test and identify gem materials.

The lab class consists of practical tuition over several days, with a practical examination on the final day of the class. Students can attend a lab class as part of the course in the UK (which will include an exam). Alternatively they may arrange practical sessions independently with a GAPP centre (these practical sessions will not include the exam; this will need to be arranged and sat separately during the January or June exam sessions, see page 29).

You will need to bring your portable instrument kit, your refractometer and light source, Diploma practical workbook and practical handbook.

### The lab class will cover:

- ▶ Observation, including the use of the 10× loupe and the microscope.
- ▶ Effective and accurate use of the refractometer and how to interpret the results for a range of different materials.
- ▶ Use of specialist gemmological instruments including the spectroscope, polariscope, conoscope, dichroscope, colour filters and UV light to help determine the identity of gem materials as well as hydrostatic determination of specific gravity.
- ▶ How to handle and identify organic, inorganic, ornamental, rough, fashioned, mounted, natural, artificial and treated stones.
- ▶ How to demonstrate and determine a logical and efficient approach to gem testing by selecting appropriate techniques for the material under test.
- ▶ How to practise safe, skilful and professional testing techniques.
- ▶ How to record and communicate accurate and precise records for gem identification.

# DIAMOND DIPLOMA

A comprehensive understanding of diamonds and diamond grading is essential for the buying, selling and trading of diamond. One of the most valuable diamond qualifications worldwide, our Diploma will give you a comprehensive understanding of diamonds and how the diamond market operates. You will study the properties of diamond, the factors affecting a diamond's appearance and properties, learn about diamond grading, the 4Cs (carat weight, colour, clarity and cut) and the other factors that influence value, as well as how to identify and recognise imitations, synthetics and treatments.

Glass filled fracture in diamond.

## Careers

Our graduates go on to successful careers in a number of areas in the trade, such as buying, selling, auctioning or valuing diamonds and diamond-set jewellery.

Diamond Diploma graduates must apply for Membership of Gem-A in order to continue to use the letters DGA after their name — a sign of excellence in the trade.

## Further study

- **Gemmology Foundation**
- **Gemmology Diploma**, leading to eligibility for FGA Membership status
- **BSc in Gemmology & Jewellery Studies** (requires successful completion of Gemmology Foundation, Gemmology Diploma and Diamond Diploma)

**Graduates of the Diamond Diploma course can apply for Diamond Membership of Gem-A, allowing them to use the letters DGA after their name. DGA Membership status conveys a student's knowledge, integrity, membership of a professional body and commitment to professional development.**

## At a glance

### Course level

Ofqual level 5

### Study options

On-site • ODL • ATC

### Qualification

Gem-A Level 5 Diploma in Gem Diamond

*(Graduates become eligible to apply for Diamond Membership of Gem-A, allowing them to use DGA Membership status)*

### Entry requirements

English qualification, e.g. IELTS Academic (Level 7) or TOEFL (score of 95-120)\*

*\* Applies to on-site and ODL study. Only required if English is not your first language.*

### Assessment

#### Theory component:

- **Assessed coursework**  
Four online assessments.
- **Examination**  
One theory examination and one practical examination.

#### Practical component:

- For on-site/ATC students this will be covered as part of your course tuition. For ODL students this can be completed by attending the Diamond Diploma lab class — completion essential.

## Course content

### The Diamond Diploma course covers:

- The ethical, social, economic and environmental implications of diamonds.
- How to accurately grade a diamond according to colour and clarity, and other factors affecting the value.
- How to recognise and describe the structure of a diamond and how this relates to its physical and optical properties.
- The different diamond types and colour mechanisms occurring within diamonds.
- How to recognise and distinguish between natural, treated and synthetic diamonds, and to compare and identify a diamond and its simulants.
- How to make, record, sketch and communicate reliable and valid observations of rough diamond crystals.
- The geological processes involved in diamond formation and how occurrence and locality affect the mining and recovery of diamonds.
- The cutting of a diamond, including the history of diamond cutting and style.
- Describing the diamond grading process, the various systems used and how grading affects the value of a diamond.

## Course materials

### Students receive:

- Fully illustrated Diamond Diploma course notes
- Diamond grading manual
- Diamond practical workbook
- Set of diamond simulants
- Portable diamond instrument kit, containing 10× loupe, thermal tester, diamond estimator gauge, tweezers, stone cloth, long-wave UK key ring and zip case.
- Diamond crystal model.



## Diamond Diploma lab class (ODL students only)

All ODL Diamond Diploma students are required to attend the Diamond Diploma lab class (also known as the Diamond Grading and Identification course). It is important that all students gain experience and guidance in the practical aspects of diamond observation, identification and grading.

The lab class will consist of practical tuition over several days, with a practical examination on the final day of the class. Students can attend a lab class as part of the course in the UK (which will include the exam).

You will need to bring your diamond instrument kit, diamond grading manual and diamond workbook to the lab class.

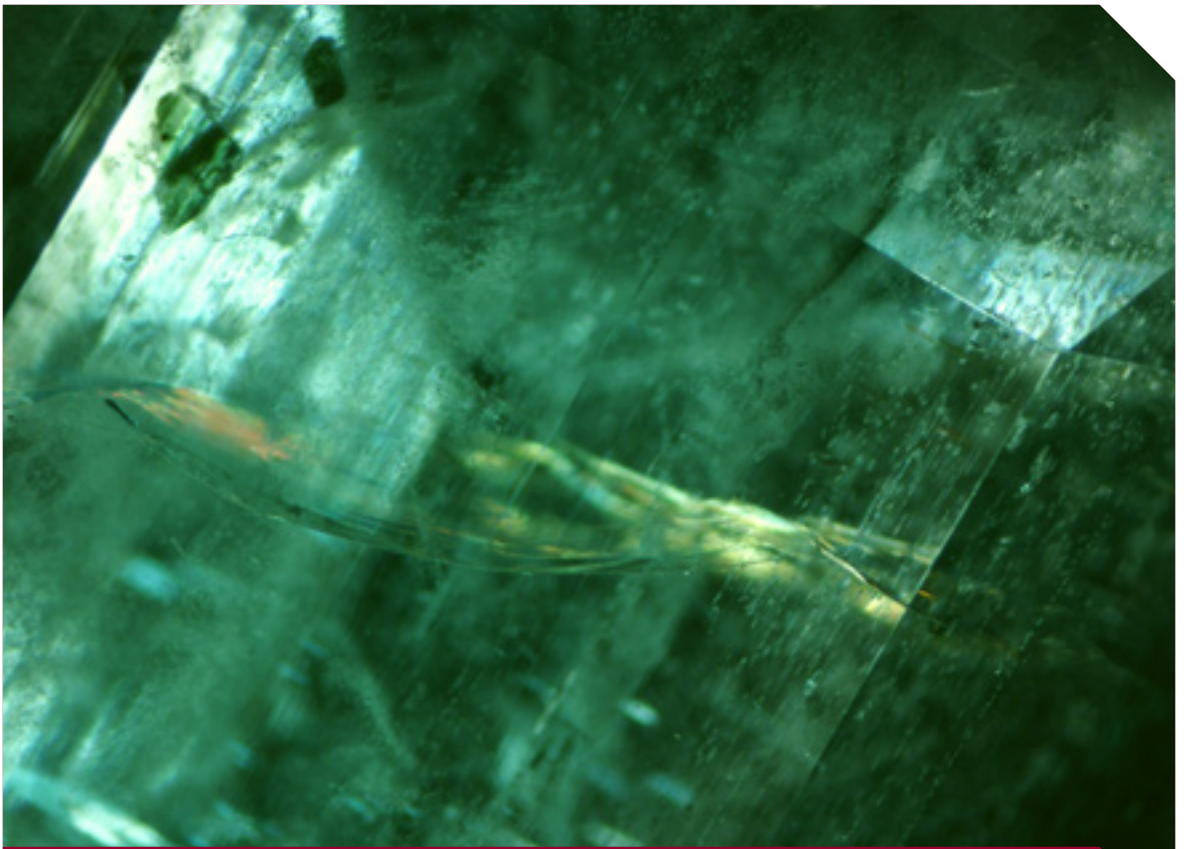
### The lab class will cover:

- ▶ How to handle a range of rough and polished diamonds.
- ▶ The correct lighting and observation techniques for consistent diamond grading.
- ▶ How to grade diamonds for cut, polish, symmetry and proportions in relation to international tolerances.
- ▶ How to colour and clarity grade to internationally-recognised standards.
- ▶ Weight estimation of mounted diamonds with an understanding of the limitations of grading diamonds in jewellery.
- ▶ Identification of a diamond and how to differentiate it from its simulants, including synthetic moissanite, glass and CZ, etc.
- ▶ Detection and identification of clarity enhancement treatments, such as laser drilling and fracture filling.

**“Having studied the Diamond Diploma, I am far more confident when buying diamonds to use in my designs. The course notes and instruments are excellent and the depth of knowledge of the tutors combined with their enthusiasm for the subject is inspiring. ODL allowed me the flexibility to study around my work whilst having the reassurance that my tutor was there to answer any questions and support me throughout the course.”**

Sally Spencer, Diamond Diploma (ODL) student





# SHORT COURSES

---

Gem-A offers a range of short courses that are designed to provide valuable gemmological knowledge.

The five-day Diamond Grading and Identification course is a hands-on practical course ideal for anyone working with diamonds or wanting to take their interest in diamonds to the next level.

GemINTRO is an online only course which is a perfect introduction to the subject of gemmology.

# GEMINTRO

*GemIntro* is a Level 2, online, entry-level course which will introduce you to the fascinating world of gemmology and the enormous variety of beautiful gems available. You can discover the basics of gemmology at your own pace - perfect for anyone looking to start or grow their career in the gems and jewellery trade, or for those completely new to gemmology and with an interest in gems.



## Career options

This course is designed to create and sustain interest in, and enjoyment of, gemmology among consumers and those considering a career, or already working in gems and jewellery.

## Course content

- An interactive course including 11 chapters and lots of informative videos, as well as additional content on a wide selection of gem materials.
- Test your knowledge as you go along by completing mini quizzes at the end of each section to unlock the next chapter.

**The aims of this course are to encourage and enable students to:**

- develop an interest in and awareness of a selection of gemstones, their properties and uses
- develop knowledge and understanding of the different aspects and basic principles of gemmology
- gain an appreciation for the characteristic and identifying features of the gemstones most commonly offered on the market
- work with or buy gems with increased confidence

## Further study

- **Workshops**
- **Gemmology Foundation**

## At a glance

### Course level

Ofqual level 2

### Study options

Online

### Qualification

Gem-A's Level 2 Award in GemIntro

### Price

£220

### Entry requirements

- Students require no prior knowledge of gemmology to study this course

### Assessment

- Assessment of students is via an online assessment at the end of the course

**"This course was very informative and fun! Not only was the material very interesting, it was presented in a manner that was easy to digest. Lessons were long enough to provide a fundamental understanding of the topic, while remaining relatively short, so they fit into a daily routine without stress."**  
Tom, US

Register now at [gemintro.gem-a.com](https://gemintro.gem-a.com)



# DIAMOND GRADING AND IDENTIFICATION COURSE

---

Forming the practical component of the Diamond Diploma for ODL students, this is also available as a stand-alone course, allowing you the opportunity to familiarise yourself with diamonds and diamond testing techniques that will enable you to accurately test, identify and grade diamonds.

This short course consists of practical tuition over several days, with a practical examination on the final day of the class.

### Who is it suitable for?

#### Ideal for anyone:

- working in any sector of the trade who has an interest in grading diamonds.
- looking to advance existing skills.

Current Gem-A Diamond Diploma ODL students are required to take this course as part of their assessment.

### Further study

**Diamond Diploma** (theory)

### Course content

#### The course will cover:

- How to handle a range of rough and polished diamonds.
- The correct lighting and observation techniques for consistent diamond grading.
- How to grade diamonds for cut, including polish, symmetry and proportions in relation to international tolerances.
- How to colour and clarity grade to internationally-recognised standards.
- Weight estimation of mounted diamonds with an understanding of the limitations of grading diamonds in jewellery.
- Identification of a diamond and how to differentiate it from its simulants, including synthetic moissanite, glass and CZ, etc.
- Detection and identification of clarity enhancement treatments, such as laser drilling and fracture filling.
- Introduction to the observation of synthetic diamond.

### At a glance

#### Study options

UK only  
On-site

#### Achievement

Diamond Practical Certificate (unit certificate)

#### Skills, experience or qualifications needed

None

#### Assessment

Exam on the final day

### Course materials

#### You will receive:

- Diamond grading manual
- Diamond practical workbook
- Portable diamond instrument kit, containing 10× loupe, thermal tester, stone tweezers, stone cleaning cloth, estimator gauge, long-wave UV key ring and a zip case.



# STUDY WITH US ON-SITE IN LONDON

---

If you want to live and study in a vibrant city steeped in history then on-site study is for you. Our headquarters are conveniently located next to Hatton Garden, the historic gem and jewellery quarter and the heart of London's gem and jewellery trade.

Our tutors are enthusiastic and knowledgeable, with real trade experience, and will ensure that you are provided with a first-class gem education. Students who study on-site are able to see and test a wide variety of gem materials under the guidance of our experienced tutors, as well as benefitting from regular practical lab classes.

# STUDYING ON-SITE

Our students are from all levels of ability; some are members of the trade wanting to qualify their skills, others are new to gemmology or just starting out in their careers. Whatever your background, you are sure to meet and learn with like-minded, enthusiastic students and forge life-long friendships and networks.

We offer two methods of on-site study: daytime classes and evening classes. All on-site courses have set start and end dates.

On-site courses consist of four modules comprising theory and practical tuition. At the end of each module you will need to complete an online assessment with a set deadline date.

Regular internet access and basic computer skills are essential.

## Study times

**Daytime classes** run from 10:00–16:30, and are perfect for those who want to work towards achieving their Diplomas as quickly as possible. At Gemmology Foundation and Diamond Diploma level, classes are held one day a week. Gemmology Diploma level classes are held three days a week (the third day is for individual practical study).

**Evening classes** run from 18:30–20:30 and are suitable for students who need to fit their study around home or work commitments, allowing you to study while pursuing your career. At Gemmology Foundation, Gemmology Diploma and Diamond Diploma level these consist of two classes a week.

### Recommended additional study hours (per week)

	Foundation	Diploma	Diamond
<b>Daytime Class</b>	4-6	6-8	8-10
<b>Evening Class</b>	6-8	8-10	10-12

**Please note: 80% attendance is the minimum requirement for all daytime and evening courses.**

### Additional services

- For an additional fee, London on-site and ODL gemmology students living in the UK and the USA are eligible to join our Stone Library Loan Scheme, providing an opportunity to borrow a diverse sample of stone sets, to aid you in your practical learning.

For more information or to join please contact [education@gem-a.com](mailto:education@gem-a.com).

### On-site study requirements

Any non-UK residents wishing to study any of our on-site courses must have a Standard Visitor Visa or proof of UK residency. To apply for a visa, or for more information, please contact UK Visas and Immigration.

### Other reasons to study in London

Our headquarters are a short walk from Chancery Lane underground station (Central line) and Farringdon station (Circle, District and Hammersmith & City underground lines and Thameslink services). When you're not studying with us there's lots to see and do: from the countless museums containing hidden gems (British Museum, Science Museum, Victoria & Albert Museum and the Natural History Museum) to monumental landmarks such as St. Paul's Cathedral, the London Eye and Buckingham Palace — not to mention countless restaurants, bars, city parks and cafés. We are just a short tube ride away from Regent Street and Oxford Street, within walking distance of Holborn and the Museum of London, and a short walk from London's vibrant Southbank, the home of London art and culture.





# On-site Dates and Prices

## ➤ Gemmology Foundation

### On-site in London (daytime class, 4-month course)

Course dates	Class Day	Class Time	Course Code	Price
10 Sep 2024 - Jan 2025	Tue	10:00 - 16:30	F24DSEP	£3,995
11 Feb 2025 - Jun 2025	Tue	10:00 - 16:30	F25DFEB	£3,995

### On-site in London (evening class, 4-month course)

Course dates	Class Day	Class Time	Course Code	Price
2 Sep 2024 - Jan 2025	Mon, Tue	18:30 - 20:30	F24ESEP	£3,410
3 Feb 2025 - Jun 2025	Mon, Tue	18:30 - 20:30	F25EFEB	£3,410

## ➤ Gemmology Diploma

### On-site in London (daytime class, 4-month course)

Course dates	Class Day	Class Time	Course Code	Price
3 Sep 2024 - Jan 2025	Tue, Wed Thu*	10:00 - 16:30	D24DSEP	£6,975
11 Feb 2025 - Jun 2025	Tue, Wed Thu*	10:00 - 16:30	D25DFEB	£6,975

\* Thursday is a half day for individual practical study at Gem-A and a half day for home study

### On-site in London (evening class, 9-month course)

Course dates	Class Day	Class Time	Course Code	Price
2 Sep 2024 - Jun 2025	Mon, Tue	18:30 - 20:30	D24ESEP	£4,850
10 Feb 2025 - Jan 2026	Mon, Tue	18:30 - 20:30	D25EFEB	£4,850

## ➤ Diamond Diploma

### On-site in London (daytime class, 4-month course)

Course dates	Class Day	Class Time	Course Code	Price
9 Sep 2024 -Jan 2025	Mon	10:00 - 16:30	G24DSEP	£3,945

### On-site in London (evening class, 4-month course)

Course dates	Class Day	Class Time	Course Code	Price
Feb 2025 - Jun 2025	TBC	18:30 - 20:30	G25EFEB	£3,650

## ➤ Diamond Grading and Identification Course

Course dates	Exam	Location	Code	Price
16 – 20 Sep 2024	21 Sep 2024	London	G24PSEP	£1,350
21 – 25 Oct 2024	26 Oct 2024	London	G24POCT	£1,350
24 - 28 Feb 2025	1 Mar 2025	London	G25PFEB	£1,420
7 – 11 Apr 2025	12 Apr 2025	London	G25PAPR	£1,420

All practical lab classes held at Gem-A London run from 09:30 - 16:30.



# STUDY WITH US ONLINE

---

Our Online Distance Learning (ODL) programme is perfect for those who want to study from the comfort of their own home or for those who live outside the UK.

All ODL students must complete a practical lab class at Gem-A's headquarters or through one of our international Gem-A Approved Practical Providers (GAPPs). Gem-A offers pre-arranged lab classes in the UK for the Gemmology Foundation, Gemmology Diploma and Diamond Diploma courses. For enquiries outside of the UK please contact the GAPP centre directly.

# ONLINE DISTANCE LEARNING (ODL)

Consisting primarily of asynchronous online study, and a practical lab class with Gem-A London, or a GAPP of your choice, our ODL programme allows you to study gemmology from the comfort of your home and fit your study around your lifestyle.

The ODL course follows a structured programme with specific deadlines for tasks and activities, while providing you the flexibility to access the course at a time that suits you. The course has set start and end dates and 80% participation in online activities is required. Regular internet access and basic computer skills are essential for this type of study.

The ODL courses consist of four modules. At the end of each module you will need to complete an online assessment with a set deadline date. All ODL students will need to attend a practical lab class, either on-site or with a Gem-A Approved Practical Provider (GAPP).

The online course provides students with a peer-based study environment, as well as providing a network of future contacts from around the world. You will be assigned an online tutor, who will be a qualified gemmologist with strong gemmological expertise, and who will be there to support you through online forums and providing feedback to your studies. You will be given your own login details to access our online learning platform and will be assigned your own study group with other ODL students.

## Study hours

Recommended study hours (per week)			
Foundation	Foundation (fast track)	Diploma	Diamond
6-8	10-12	10-12	8-10

## Additional services

For an additional fee, on-site and ODL gemmology students living in the UK and the USA are eligible to join our Stone Library Loan Scheme, which allows you to borrow a diverse sample of stone sets, to aid you in your practical learning.

For more information or to join please contact [education@gem-a.com](mailto:education@gem-a.com).

# GAPPS

The Gem-A Approved Practical Providers (GAPPs), allow ODL students to study the practical lab class component of their course closer to home.

If you're not attending a Gem-A lab class in London, please contact a GAPP directly. Some ATCs also act as GAPP centres and offer this practical tuition separately from their other courses — please contact individual ATCs to see what is available (see pages 24–26 for a list of ATCs).

Country	Gapp Centre	Exam Centre available in this location	Contact details
<b>Australia</b>	Ross Chapman, Brisbane		t: +61 438636294 e: bigred03@bigpond.net.au
<b>Bahrain</b>	Bahrain Institute for Pearls and Gemstones (DANAT)		t: +973 17201333; t: +973 38000428 e: info@danat.bh;
<b>Canada</b>	George Brown College (CADIT), Toronto, Canada		t: +1 4164155000 e: kmoller@georgebrown.ca w: www.georgebrown.ca/jewellery/
<b>Greater China Hong Kong, SAR</b>	Asian Gemmological Institute and Laboratory Ltd (Chinese/English)	●	t: 852 2723 0429 e: agil@agil.com.hk w: www.agil.com.hk
<b>Japan</b>	Ayako Naito, Tokyo		t: +81 3 6803 0068 e: galleryhg@hotmail.com
	Gem Research Japan Inc., Osaka		t: +81(0)66252-1222 e: grj@way.ocn.ne.jp w: www.grjapan.ddo.jp
<b>New Zealand</b>	Jill Towers, Auckland	●	t: +64 0224149405 e: pjttowers@outlook.co.nz w: www.nzjvl.co.nz
<b>South Africa</b>	Craig Thomas, Gauteng	●	t: +27 0114650208; t: +27 0824900219 e: catgems@gmail.com; e: info@gemlab.co.za
	The Gem Lab, Cape town		t: +27 021 761 1746 e: jeremy@gemlab.co.za w: www.gemlab.co.za

## GEM-A APPROVED PRACTICAL PROVIDERS (GAPPS)

Country	Gapp Centre	Exam Centre available in this location	Contact details
<b>Switzerland</b>	David Craft, Gabriel Arredondo, Geneva	●	<b>t:</b> +41 223103450; <b>t:</b> +41 787518565 <b>e:</b> gabriel.arredondo@hotmail.com <b>w:</b> www.davidcraft.ch
	Swiss Gemmological Institute SSEF	●	<b>t:</b> +41612620640 <b>e:</b> education@ssef.ch <b>w:</b> www.ssef.ch
<b>Taiwan</b>	Taiwan Gemmological Institute	●	<b>t:</b> +886225211365 Line: 0989909786 <b>e:</b> tgi.atc.lab@gmail.com <b>w:</b> www.tgi-fga-dga.url.tw
	Chuang-En Gemmology Consultant Institute		<b>t:</b> +886 935083063 <b>e:</b> melinda2085@yahoo.com.tw
	Chao-Ming Wu		<b>t:</b> +886227412124 <b>e:</b> info@fga-dga-gem.com <b>w:</b> http://www.fga-dga-gem.com/
<b>Thailand</b>	Ross Chapman		<b>t:</b> +886225211365 <b>e:</b> bigred03@bigpond.net.au
	The Gem and Jewelry Institute of Thailand (Public Organization); Bangkok (English)	●	<b>t:</b> +662 6344999 ext 301-313 <b>e:</b> tpavaro@gmail.com <b>w:</b> www.git.or.th
<b>UK</b>	Birmingham City University		<b>t:</b> +44 (0)1213004016 <b>e:</b> michelle.mccormick@bcu.ac.uk <b>w:</b> www.bcu.ac.uk/jewellery
	K.A.T.E. Coventry		<b>t:</b> +44 (0)2476467428 <b>e:</b> kbhopley@hotmail.com <b>w:</b> www.katharinealeks.co.uk
	Rachel Warner, Berkshire (Foundation only)		<b>t:</b> +44 (0)2076876501 <b>e:</b> jewelsandgems@outlook.com
<b>USA</b>	FIT, New York	●	Contact Gem-A London: <b>e:</b> education@gem-a.com
	Corbeille Gemology, Texas (Foundation only)		<b>t:</b> +1 805 354 8023 <b>e:</b> info@corbeillegemology.com <b>w:</b> www.corbeillegemology.com

# Online Dates and Prices

## ➤ Gemmology Foundation

### ODL (fast-track; 6-month course)

Course dates	Lab class	Course code	Price
6 Jan 2025 – Jun 2025	Without lab class	F25OJAN	£3,135
	With UK lab class*	F25OJAN-P	£3,825

### ODL (9-month course)

Course dates	Lab class	Course code	Price
2 Sep 2024 - Jun 2025	Without lab class	F24OSEP	£3,135
	With UK lab class*	F24OSEP-P	£3,825
30 Sep 2024 - Jun 2025 Japanese	Without lab class*	F24OSEP-J	£3,750
7 Apr 2025 - Jan 2026	Without lab class	F25OAPR	£3,135
	With UK lab class*	F25OAPR-P	£3,825

**Please note:** if you select an ODL course without a lab class you must arrange your own lab class or GAPP tuition separately.

### \*Foundation lab classes (ODL students only)

Course dates	Location	Course code
16 - 18 Oct 2024	London	F24POCT
20 - 22 Nov 2024	London	F24PNOV
11 - 13 Dec 2024	London	F24PDEC
2 - 4 Apr 2025	London	F25PAPR
7 - 9 May 2025	London	F25PMAY

## ➤ Gemmology Diploma

### ODL (9-month course)

Course dates	Lab class	Course code	Price
2 Sep 2024 – Jun 2025	Without lab class	D24OSEP	£4,600
	With UK lab class*	D24OSEP-P	£5,635
30 Sep 2024 - Jun 2025 Japanese	Without lab class	D24OSEP-J	£4,995
7 Apr 2025 – Jan 2026	Without lab class	D25OAPR	£4,600
	With UK lab class*	D25OAPR-P	£5,635

**Please note:** if you select an ODL course without a lab class you must arrange your own lab class or GAPP tuition separately.

### \*Diploma lab classes (ODL students only)

Course dates	Exam date	Location	Course code
27 - 31 Jan 2025	1 Feb 2025	London	D25PJAN
24 - 28 Mar 2025	29 Mar 2025	London	D25PMAR
19 - 23 May 2025	24 May 2025	London	D25PMAY

## ➤ Diamond Diploma

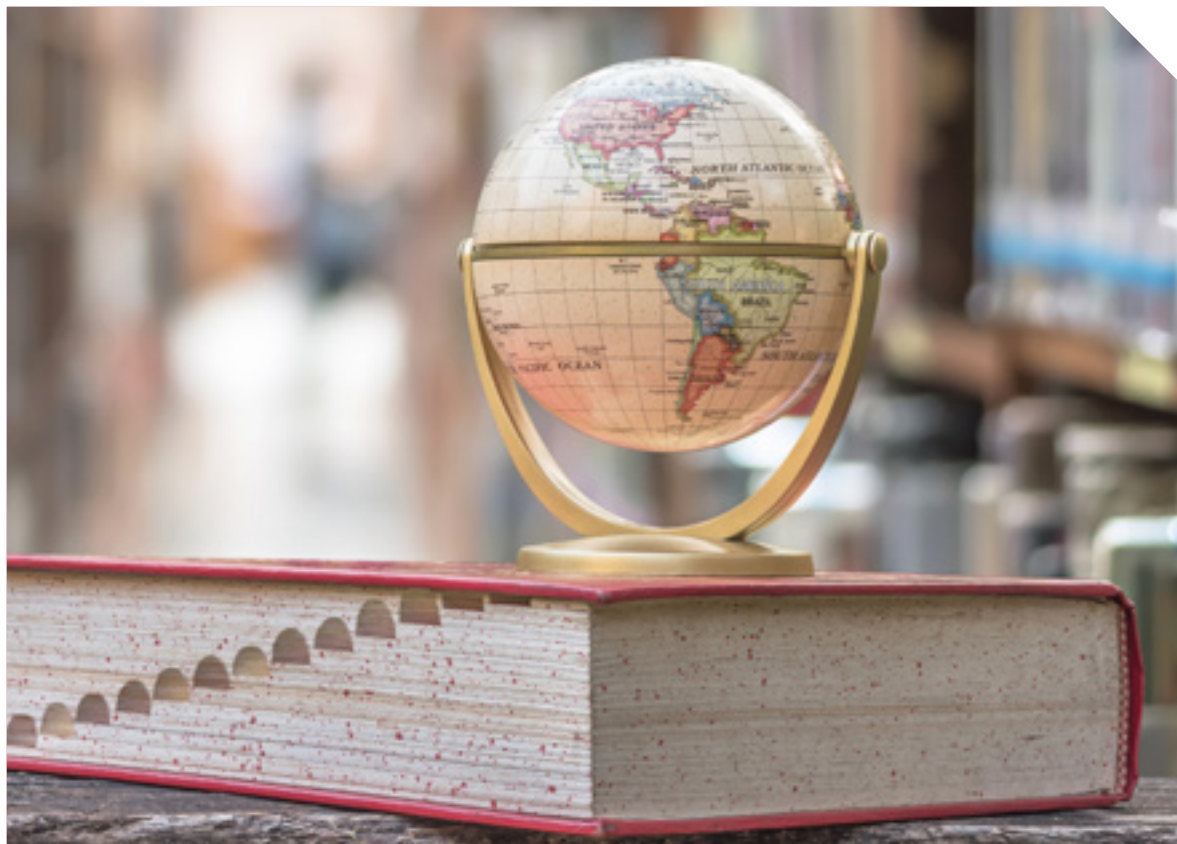
### ODL (9-month course)

Course dates	Lab class	Course code	Price
16 Sep 2024 – Jun 2025	With UK lab class*	G24OSEP-P	£3,820
14 Apr 2025 – Jan 2026	With UK lab class*	G25OAPR-P	£3,820

### \*UK Diamond Grading and Identification lab class dates (ODL students only)

Course dates	Exam date	Location	Course code
16 – 20 Sep 2024	21 Sep 2024	London	G24PSEP
21 – 25 Oct 2024	26 Oct 2024	London	G24POCT
24 – 28 Feb 2025	1 Mar 2025	London	G25PFEB
7 – 11 Apr 2025	12 Apr 2025	London	G25PAPR





# STUDY WITH US ABROAD

---

If you don't live in or near London but want to study on-site and benefit from regular practical tuition, then our Accredited Teaching Centres (ATCs) are perfect for you. Our centres are institutions, colleges and schools who have signed up with us to teach our courses using our equipment and course notes. Most students have the benefit of being able to study in their own language (we offer the option of Simplified and Traditional Chinese, French and Japanese notes).

To study with an ATC, contact the individual ATC for an application form.

# ACCREDITED TEACHING CENTRES

**Key:** **F** = Gemmology Foundation, **D** = Gemmology Diploma, **DD** = Diamond Diploma

North America					
Country	F	D	DD	Centre and language	Contact details
USA	•	•		Jewelry Television (JTV)	t: +1 8653235631 e: education@jtv.com w: www.jtv.com/education

Europe					
Country	F	D	DD	Centre and language	Contact details
France	•	•		Laboratoire de Gemmologie, Marseille (French)	t: +33 (0)4 91 92 68 45 e: gemlabmarseille@wanadoo.fr w: www.gemlabmarseille.com
	•	•		L'École des Gemmes, Paris (French)	t: +33 (0)6 81 91 82 64 e: info@ecoledesgemmes.fr w: www.ecoledesgemmes.fr
Greece	•	•	•	Gem Testing Laboratory, Athens (English)	t: +30 2103222157 e: sergems@yahoo.gr w: www.gtlathens.gr
Italy	•	•		Istituto Gemmologico Ligure, Genova (English/Italian)	t: +39 3488121790 e: info@gemhouse.org / piero.manuelli@gemhouse.org w: www.gemhouse.org
Netherlands	•	•		Nederlands Edelsteen Laboratorium, Leiden (English)	t:+31-71-7519665 or +31-71-7519661 e: nel@naturalis.nl w: www.naturalis.nl/nel
Sweden	•	•		Kristallen Stenslip, Lannavaara (English)	t: +46 98131060 e: jenny@kristallen.com w: www.kristallen.com
Switzerland	•	•		David Craft, Geneva	t: +41 78 751 85 65 e: info@davidcraft.ch w: www.davidcraft.ch
UK	•	•	•	Birmingham City University	t: + 44 (0) 121 300 4016 e: michelle.mccormick@bcu.ac.uk w: www.bcu.ac.uk/jewellery
	•	•	•	Gem-A London	t: +44 (0) 2074043334 e: education@gem-a.com w: gem-a.com
	•	•	•	K.A.T.E., Coventry	t: +44 (0) 2476467428 m: +44 (0) 7990908471 e: kbhopley@hotmail.com

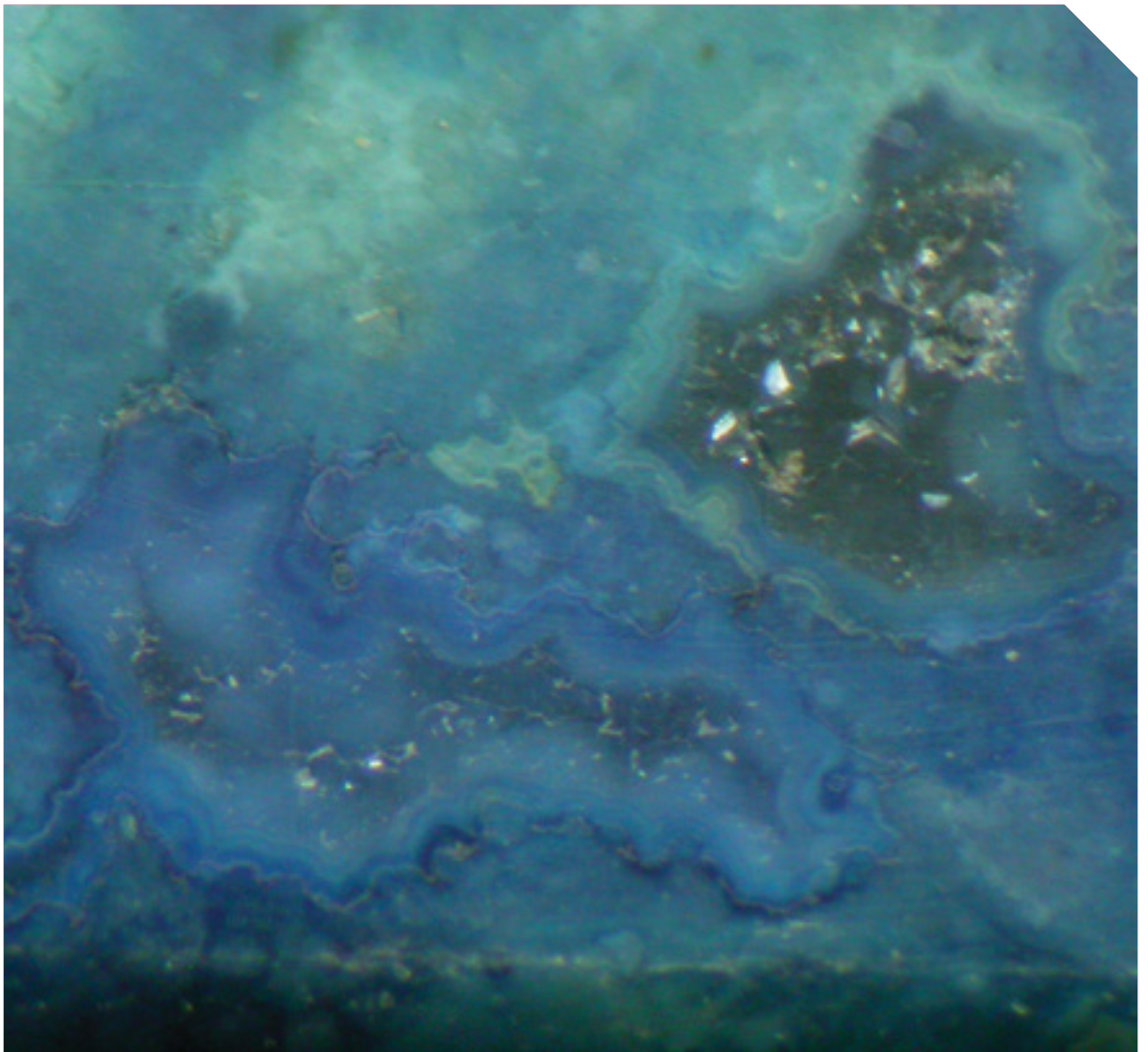
## ACCREDITED TEACHING CENTRES (ATCS)

<b>Asia</b>						
Country	F	D	DD	Centre and language	Contact details	
<b>Bahrain</b>	●	●		Bahrain Institute for Pearls & Gemstones (DANAT)	<b>t:</b> +97317201333 <b>t:</b> +973 38000428 <b>e:</b> education@danat.bh <b>w:</b> www.danat.bh	
			●	BG Gemmological Institute (BGGI), Beijing (Chinese)	<b>t:</b> +86 10 85698528 <b>e:</b> 409698056@qq.com	
<b>Greater China Chinese Mainland</b>	●	●	●	China University of Geosciences, Beijing (Chinese)	<b>t:</b> +86 10 82322227 <b>e:</b> 284834253@qq.com <b>w:</b> www.cugb.edu.cn	
	●	●	●	China University of Geosciences, Gemmological Institute, Wuhan (Chinese)	<b>t:</b> +86 27 87481009 <b>e:</b> yxwang@cug.edu.cn	
	●	●		Guangdong Gems & Jade Exchange	<b>t:</b> +86 2039022717 <b>e:</b> education@GDGJE.com <b>w:</b> www.gdgje.com	
	●	●		Guilin University of Technology (Chinese)	<b>t:</b> +86 773 3686580 <b>e:</b> GUTjetc@hotmail.com <b>w:</b> www.at0086.com	
	●	●		Hong Kong Institute of Gemmology, Shenzhen branch (Chinese)	<b>t:</b> +86 75525610440 <b>e:</b> cmoyjade@163.com <b>w:</b> www.hkzbx.com	
	●	●	●	Beijing Guoshou Gems & Jewellery Standardization Research Center (Chinese)	<b>t:</b> +8601064878116 <b>e:</b> njc@njc.com.cn <b>w:</b> www.njc.com.cn”	
	●	●		Shanghai Junhao Jewelry Education and Training Center	<b>t:</b> +86 2162332937 <b>e:</b> 851412927@qq.com <b>w:</b> www.zhubaopx.com	
	●	●	●	Zhong Yao Education Training Center (Chinese)	<b>t:</b> 0757-28775660 <b>e:</b> fszyedu@foxmail.com <b>w:</b> www.fszyedu.com	
					National Gems & Jewelry Testing Group Beijing Education Technology CO.LTD. (NGTC) offers a number of locations across China. For more information on the branch location see below:	<b>t:</b> +86 15811330342 <b>e:</b> hmulin@126.com.thanks <b>w:</b> www.ngtc.com.cn
	●	●		National Gems & Jewelry Testing Group Beijing Education Technology CO.LTD. (NGTC), Beijing (Chinese)		
	●	●		NGTC, Guangzhou branch (Chinese)		
	●	●		NGTC, Kunming branch (Chinese)		
	●	●		NGTC, Shanghai branch (Chinese)		

ATCs continued overleaf >>

## ACCREDITED TEACHING CENTRES (ATCS)

<b>Asia continued</b>					
Country	F	D	DD	Centre and language	Contact details
<b>Greater China Chinese Mainland continued</b>	●	●		NGTC Education Science & Technology Shenzhen LTD (Chinese)	t: 0755-2510 3953 (office) Hotline for courses: 400-698-6868 e: gemashenzhen@ngtcedu.com w: www.ngtcedu.com/
<b>Greater China Hong Kong, SAR</b>	●	●	●	Asian Gemmological Institute and Laboratory Ltd (Chinese/English)	t: 852 2723 0429 e: agil@agil.com.hk w: www.agil.com.hk/en/index.php
	●	●	●	Hong Kong Baptist University School of Continuing Education (Chinese)	t: +852 3411 1959 e: gpsdjd@hkbu.edu.hk w: sce.hkbu.edu.hk
	●	●	●	Hong Kong Institute of Gemmology (Chinese)	t: +852 2815 1880 e: school@hkig.co.hk w: www.hkgems.com.hk
	●	●		Hong Kong Jewelry Manufacturers' Association (Chinese)	t: +852 2122 5057 e: enquiry@jewelry.org.hk w: www.jewelry.org.hk
<b>Greater China Taiwan, ROC</b>	●	●	●	Chao-Ming Wu, Taipei (Chinese)	t: +886 (02)2731-4174 e: gem.w4176@gmail.com w: www.fga-dga-gem.com
	●	●		Chuang-En Gemology Consultant Institute (CGCI), (Chinese)	t: +886 935083063 e: melinda2085@yahoo.com.tw
	●	●		Taiwan Earth Gemmological Inc., Taichung (Chinese)	t: +886919076877 e: vivid_gemny6688@yahoo.com.tw
	●	●	●	Taiwan Gemmological Institute (Chinese)	t: +886 225211365 e: tgi.atc@gmail.com w: www.tgi-fga-dga.url.tw
<b>India</b>	●	●		Asiatic Center of Gemological Services, Chandigarh (English)	t: +91-9819822350, +91-9324286332 e: asiaticcenter@gmail.com w: acgs.in
<b>Japan</b>	●	●		Japan Jewelry Crafts School (JJCS), Tokyo (Japanese)	t: +81-3-3835-3388 e: careers@jj-craft.com w: www.jj-craft.com/
<b>Myanmar</b>	●	●		GSC Gemological Science Centre, Yangon (English)	t: +951 571028/+959 5002581 e: tinkyawthan.geo@gmail.com
<b>Singapore</b>	●	●		Far East Gemological Institute (English)	t: +65 67458542 e: info@gem.com.sg w: www.gem.com.sg
<b>Sri Lanka</b>	●	●		To be confirmed	
<b>Thailand</b>	●	●		The Gem and Jewelry Institute of Thailand (Public Organization); Bangkok (English)	t: +662 6344999 ext 301-313 e: tpavaro@gmail.co/ktipnata@git.or.th/swandee@git.or.th www.git.or.th



# FURTHER STUDY

---

Students who have already achieved Gem-A's Gemmology Diploma and Diamond Diploma may be interested in furthering their credentials with either a BSc or the FEEG Diploma.

# BSC IN GEMMOLOGY & JEWELLERY STUDIES

---

Birmingham City University (BCU), are offering Gem-A's FGA DGA Members a chance to gain a world-respected scientific qualification with just one year of study. This top-up degree course is only available to those who have passed their Gemmology Diploma and Diamond Diploma and who are paid-up Members of the Association.

## Careers

With advanced gemmological knowledge and skills, and membership of a professional organisation, you will be in demand from wholesale and retail buyers of coloured gemstone and diamonds, as well as diamond and gemstone laboratories, mining operations, valuers, auction houses, manufacturers and retailers.

## Further study

### FEEG Diploma

### Module breakdown

- Advanced Gemmology 1 (15 credits)
- Advanced Gemmology 2 (15 credits)
- Advanced Diamonds (30 credits)
- Geology of Gemstones (15 credits)
- Valuation and Appraisal Theory (30 credits)
- Research Project (15 credits)

**You will gain the highest level of professionally-recognised gemmological education and a sound working knowledge of all relevant aspects of the jewellery trade.**

## At a glance

### Course level

Ofqual level 6

### Study options

Birmingham City University

### Course Length

One year

### Qualification

Bachelor of Science (BSc)

### Entry requirements

- Successful completion of Gem-A's Gemmology Foundation, Gemmology Diploma and Diamond Diploma
- Paid-up Membership of Gem-A
- Language requirements: Basic English qualification, e.g. IELTS Academic (Level 7) or TOEFL (score of 94-101) — only required if English is not your first language

### Assessment

Online assessments, reviews, projects and written exams (a breakdown of each module assessment method is available upon request)

### Contact

**michelle.mccormick@**

**bcu.ac.uk**

**for more information**

## Course content

### The degree course covers:

- The theory of crystallography, symmetry and tensor properties of crystals and their application within gemmology.
- Chemical analysis techniques and their use in gemmology.
- Advanced spectroscopy techniques, and analysis and interpretation of results.
- Collection of fluorescence spectra and how to analyse and interpret results.
- Geological processes such as tectonic plate movements and the formation of different rock types.
- Petrology of igneous and metamorphic rocks to the evolution of gem-bearing pegmatites.
- Theoretical and practical applications of spectroscopic techniques used within gemmology, including the use of UV-VIS and FTIR spectroscopy instruments, and the interpretation of data collected.
- Advanced gem testing techniques to enable the selection of appropriate methodologies to identify a range of unknown samples, including understanding and implementing the theory of fluorescence.
- Application of the theory and practice of interpreting test results and analytical data to develop an understanding of precision and accuracy.
- Selection of appropriate analytical methods to test unknown diamond samples to determine the nature of sample materials, and research of the literature to find suitable research/resources to interpret and validate the experimental findings.
- How to write a technically proficient valuation description.
- How to research a range of prices and values for gemstones, jewellery components and complete jewellery items.
- How to describe the processes of prospecting for new gem-bearing deposits, and the evaluation of potential extraction methods.
- How to prepare and deliver professional presentations.
- How to prepare a technical report suitable for presentation to a commercial client.
- How to write an academically rigorous research project.
- How to work as an effective member of a team in order to deliver a group project.

**Please note:** The course content and structure may change from the information published here. Please use these as guidelines only.



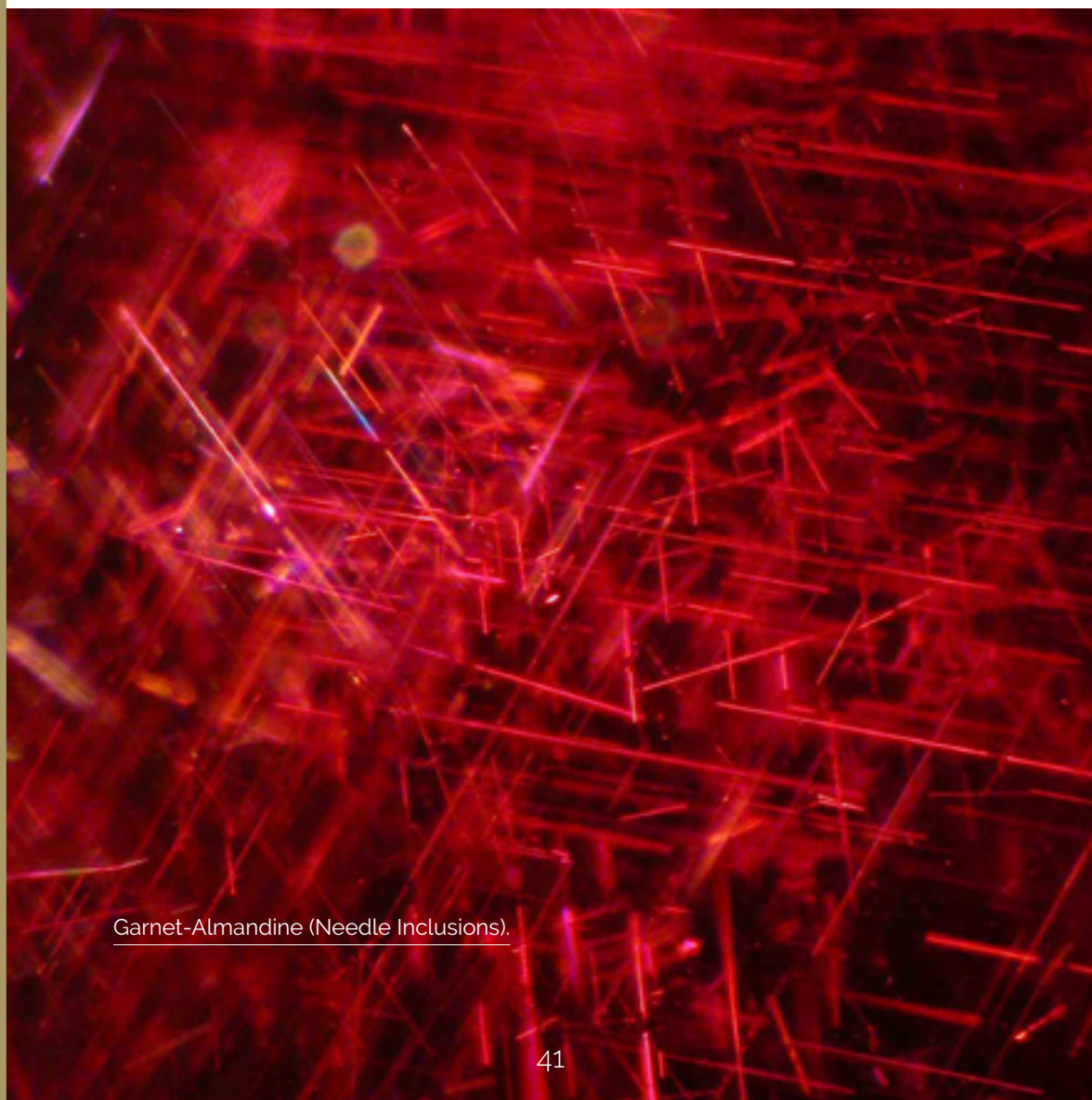
# BSC Dates and Prices

## Course dates

September – June

For all dates and prices or for further information please contact  
[michelle.mccormick@bcu.ac.uk](mailto:michelle.mccormick@bcu.ac.uk)

---



Garnet-Almandine (Needle Inclusions).

# FEEG DIPLOMA

---

The Federation for European Education in Gemmology (FEEG) was set-up in 1995 by several gemmology institutions to create a pan-European gemmology qualification that would be recognised by all bodies and institutions across Europe.

The FEEG Diploma is built from the collective knowledge of Europe's top gemmological training centres, and challenges trained gemmologists' theoretical and practical knowledge of over 100 stones, from the everyday gems to the lesser known minerals.

As a founding member of the FEEG Diploma, graduates of Gem-A's Gemmology Diploma are eligible to apply for the exam.

**“The FEEG exam was a great way to refresh and revitalize my gemmological knowledge with an exciting new challenge. I would highly recommend it to anyone looking to further their international credentials.”**

Lizzie Gleave FGA DGA EG, former Gem-A Chair of Examiners

## Why take the FEEG exam?

- ▶ Revisit, refresh and re-test knowledge learned on your Gemmology Diploma or Baccalaureate course.
- ▶ Learn about a diverse selection of stones and minerals through self-study, from the commercial to the rare.
- ▶ Enhance your career prospects throughout Europe with this European-wide gemmology examination, recognised across the continent.
- ▶ Become part of the European community of gemmologists.

## Course content

FEEG expects students to autonomously work through an extensive syllabus to fulfil the criteria needed to pass the final exam, which will test a gemmologist's aptitude and knowledge. Gem-A HQ run additional workshops to help you prepare for the FEEG exam. You can choose to attend a three-day workshop, offering an overview of the FEEG syllabus, FEEG exam requirements and practical work, or a refresher one-day workshop to help to familiarise you with the stones.

## At a glance

### Exam location

Gem-A headquarters.  
(Also available in 10 centres across Europe)

### Qualification

EG (European Gemmologist)

### Entry requirements

Gem-A's Gemmology Diploma

### Assessment

One theory paper  
One practical paper

**To request the exam syllabus or to apply for the exam contact [education@gem-a.com](mailto:education@gem-a.com). For more information about exam centres visit [www.feeg-education.com](http://www.feeg-education.com)**

## FEEG Dates and Prices

Exam dates (Gem-A HQ)	Exam	Price
1 Oct 2024	Theory and practical	£300
1 Jul 2025	Theory and practical	£300
Additional study days (Gem-A HQ)		
One day workshop	30 Sep 2024	£100
Extended study days (Gem-A HQ)		
Three day workshop	26, 27 & 30 Sep 2024	£500 (members) £650 (non-members)



Beryl, Aquamarine  
Crystal.

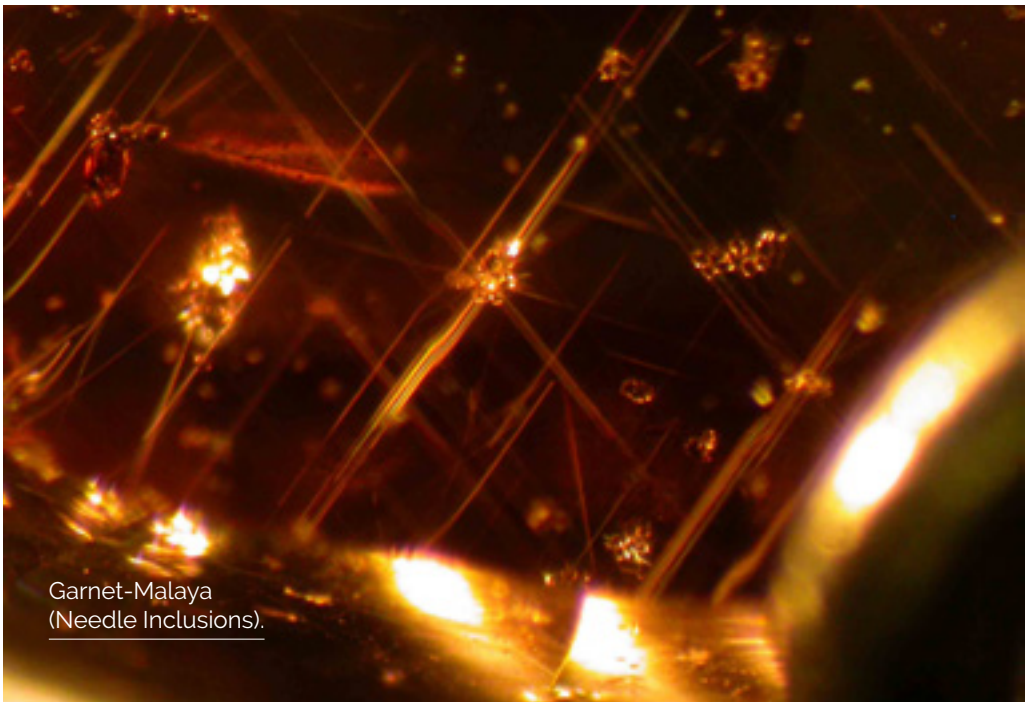
# GEM-A STUDENT SERVICES

---

Gem-A have been creating gemmologists since 1908 — that's over 110 years of experience and expertise. We take pride in our Graduates and support them throughout their studies and beyond. Our student services range from support, access and membership. Become part of the Gem-A community and enjoy a range of services when you study our Foundation or Diploma courses.

# SERVICES OFFERED

- Gem-A Stone Library — For those studying Foundation or Diploma in Gemmology in the UK, we are able to offer you access to the stone library. For more information email [education@gem-a.com](mailto:education@gem-a.com)
- Student Membership — Current, registered students automatically become student members of Gem-A and can start taking advantage of the discounts and access to knowledge as soon as they are accepted onto our Gemmology Foundation, Diploma or Diamond Diploma Courses.
- Student Support — Gem-A have a dedicated support officer who can give you confidential advice, help with exam worries, attendance and disability support.
- Sir James Walton Library — The Gem-A library, housed at Gem-A HQ in London, is one of the largest collections of gemmology books in Europe. Students can use the library (by appointment only).
- Totum Professional Card - Gem-A students and members based in the UK can apply for a Totum Professionals discount card giving access to hundreds of discounts from 400+ brands.



Garnet-Malaya  
(Needle Inclusions).

# STUDENT MEMBERSHIP

While studying Foundation or Diploma courses with Gem-A, students are considered to be Student Members of the Association and can access some of the benefits of Gem-A Membership, including online access to our two leading publications *The Journal of Gemmology* and *Gems&Jewellery*.

## About *Gems & Jewellery*

The first issue of *Gems&Jewellery* was launched exclusively for Gem-A members in 1991, offering a more accessible approach to the often complex field of gemmology. *Gems&Jewellery* presents a range of articles on gems, minerals and jewellery, alongside news, features and opinion pieces. Articles cover a broad range of topics, from synthetics, ethics and nomenclature to coverage of Gem-A field trips, events and international exhibitions.

Thousands of gem and jewellery industry professionals, gemmology students, retailers and members of the National Association of Jewellers in the United Kingdom rely on *Gems&Jewellery* for insightful advice, entertaining features, beautiful imagery and accurate gemmological updates.

## About *The Journal of Gemmology*

In 1947, Gem-A launched *The Journal of Gemmology*, which continues to offer the latest in gem research, knowledge and expertise — an essential tool for professional gemmologists. At the end of 2013, *The Journal* was expanded and redesigned by Brendan M. Laurs FGA, the current editor-in-chief. *The Journal of Gemmology* is published quarterly, in hardcopy and electronic format.

Each issue features timely scholarly articles written by the leading experts in gemmology, concerning a wide range of topics — from the latest information on gem localities and identification characteristics, to studies of synthetics, treatments, new technologies and historical artefacts. *The Journal* ensures its readers stay up-to-date with the latest research and gemmological developments, instruments, publications, articles and educational events.



# GEM-A GRADUATION AND PRESENTATION OF AWARDS

Taking place in London each year, the Gem-A Graduation and Presentation of Awards is a fantastic celebration of our student's achievements from around the world.

Students across our Gemmology Foundation, Gemmology Diploma and Diamond Diploma courses can strive towards our coveted prizes, presented each year at the Gem-A Graduation Ceremony.

These eight accolades are presented to the most exceptional and insightful students worldwide, looking at their practical and theoretical exam results and projects. These special prizes are an important part of Gem-A's history and we celebrate the prizes and the winners each year.



## GEMMOLOGY FOUNDATION CERTIFICATE

### **Anderson Medal**

Awarded for the best set of papers for the year in the Foundation examination.

## GEMMOLOGY DIPLOMA

### **Christie's Prize for Gemmology**

Awarded to the overall best candidate of the year in the Gemmology Diploma examination.

### **Anderson Bank Prize**

Awarded to the candidate submitting the best theory papers of the year for the Gemmology Diploma examination

### **Tully Medal**

Recognises an individual who submits the best set of answers in the Gemmology Diploma examination in any one year and who is also, in the opinion of the Examiners, of sufficiently high standard to merit the high award.

### **The Read Practical Prize**

Awarded to the candidate who submitted the best practical papers of the year for the Gemmology Diploma examination. Sponsored by Gemworld International.

## DIAMOND DIPLOMA

### **The Deeks Diamond Prize**

Awarded to the best theory candidate of the year in the Diamond Diploma examinations.

### **The Mok Diamond Practical Prize**

Awarded to the best practical candidate in the Diamond Practical Examination.

### **The Bruton Medal**

Awarded to the overall best candidate of the year in the Diamond Diploma examinations.





# GEM-A INSTRUMENTS

From 10× loupes to microscopes, Gem-A Instruments provides internationally-renowned gemmological instruments, made to the exceptional standards demanded by our members, students, valuers and the jewellery trade.



Visit our shop, based on-site at our London headquarters, next to Hatton Garden to purchase quality instruments, books and gemmological equipment.

Or shop online now at [h\] de\\$ Zb #V\\$db](#) .

### Ej ghidX` ^cXj YZhO

- Microscopes and accessories
- Loupes and magnifiers (10× triplets, LED loupes, Zeiss and Schneider loupes, estimator loupe)
- Light sources and torches (flip lights, portable UV lamps, LED lights)
- CZ Colour Comparison Sets
- Filters, including Chelsea Colour Filter and Hanneman/Hodgkinson Gem Filter Set
- Polariscopes
- Refractometers and accessories
- Dichroscopes
- Spectroscopes
- Diamond testers
- Coloured stone testers
- Gauges
- Scales and hydrostatic weighing
- Tweezers and stone holders
- Portable gem instrument kits
- Gem-A merchandise and gifts
- A wide range of books

If you have questions about any of our products, please contact Gem-A Instruments at [^chig b Zcih6 \Zb #V\\$db](#) , or telephone **! \*\* 1&Z (& - \* & ^ ) ) \***. Gem-A Instruments is open Monday to Friday, from 09:30 to 16:30

### : ? 9E J DI I

Gem-A members and Gem-A registered students receive 5% discount on books and 10% discount on instruments. Log on to our website to shop with your discount now!

# TERMS & CONDITIONS

## ODL and London Courses

**These terms and conditions represent an agreement between Gem-A and you, a prospective student.**

**Payments:** All course fees must be paid in full prior to the commencement of the course unless the instalment agreement has been made. Your application cannot be accepted unless accompanied by the correct payment. Please do not forget to add postage if applicable. The course fees advertised in this prospectus include course notes, tuition, instruments and examinations. Course prices are reviewed each academic year. You must inform Gem-A immediately of any changes in your circumstances that may affect your fee status. All outstanding fees must be paid before the final online assessment date concludes; failure to do so will result in you being refused entry to the exams. In the event of late or non-payment/default of account, any debt collection charges will be passed on to the student/guarantor at a rate of 12.5% of the value of any overdue invoice(s) on their account. The student consents to this information being passed to a third party collection agent in the event of late or non-payment/default of account.

**Instalments:** Details of the instalment options can be downloaded from the website. Please note that an administration fee will be applicable. We can only provide the instalment plans indicated and the standard plans may not be deviated from. Each instalment must be paid in full and on time, and all fees must be paid by the last instalment date indicated on the schedule. For further information please contact [education@gem-a.com](mailto:education@gem-a.com).

**Withdrawal or cancellation:** You have 14 calendar days from the date of registration to cancel your course. For cancellations received within 14 days from the date of registration, and prior to the course start date, a 100% refund will be provided. For cancellations received within 14 days from the date of registration, but after the course start date, you will incur a 25% cancellation fee. For cancellations received after 14 days from the date of registration, no refund will be given. If a student has opted to pay by instalments these clauses will still apply. Course transfers are permitted when there are proven mitigating circumstances.

**Attendance:** You are expected to attend all classes or complete all tasks and activities required by your course. If your attendance or online activity falls below 80% then you will not be entered into course exams and may be withdrawn from the course(s) with no refund given. Students

should follow the absenteeism procedures outlined in Gem-A Student Policies and Procedures. Advance notification must be given for any known forthcoming absences. If you do not attend classes or cannot complete the tasks requested due to unforeseen circumstances you must contact your tutor or the London Education Admin team as soon as you are able to do so. Students who have attendance issues and who fail to contact Gem-A may be required to attend a Non-Attendance Meeting (NAM) and may be withdrawn from the course(s).

**Behaviour:** Students are expected to adhere to the policies and procedures outlined in the Gem-A Student Guide to Policies and Procedures at all times and to act appropriately in all classes and interactions with fellow students, tutors and staff. Failure to do so could result in dismissal from the course and/or refusal to accept applications for subsequent courses.

**Coursework and assessment:** Your course content and assessment methods will be outlined to you in your induction class or during the introduction to your online course. You are required to complete the coursework assessments that contribute towards your final grade within the timeframes specified. It is solely the responsibility of the individual student to ensure they understand the course and assessment requirements and complete these by the given dates.

**Privacy information:** You understand, and by attending the course agree, that Gem-A may need to contact you, your next of kin, UK Visas and Immigration, your employer or any other fee-sponsoring body, regarding issues such as attendance, conduct, progress, etc. Such communication may be via telephone, letter, fax, email or any other appropriate means. To view Gem-A's full privacy statement please go to [www.gem-a.com](http://www.gem-a.com).

**Unique Learner Number (ULN) – UK ATTENDING STUDENTS ONLY:** The information you supply will be used by the Chief Executive of the Education and Skills Funding Agency, to issue you with a Unique Learner Number (ULN) and to create your Personal Learning Record. Further details of how your information is processed and shared can be found at <https://www.gov.uk/government/publications/lrs-privacy-notice>. Because the ULN is required for the administration of services within the education and training sector (such as the issuing of certain qualifications), you cannot opt out of being issued with a ULN on

the Learner Register. You can opt out of sharing your participation and achievement data through the Learning Records Service. Details of how you may opt out of sharing your participation and achievement data within the Learning Records Service can be found at <https://www.gov.uk/government/publications/learning-records-service-the-plr-for-learners-and-parents> or by telephoning their helpdesk on 0845 602 2589.

**Exam Centre:** Gem-A sets up examination centres in areas where there is usually a sufficient number of candidates wishing to sit the examinations and an availability of gemmological instruments for the practical exams. The allocation of students to an exam centre is entirely at the discretion of Gem-A and no guarantee is given that a centre will be set up in any particular locality.

**Change of contact details:** It is the student's responsibility to ensure Gem-A has been informed of any changes to personal details, including changes of residential address. You must inform Gem-A immediately of any such changes. To do so please email [education@gem-a.com](mailto:education@gem-a.com).

**Complaints:** Gem-A has a complaints procedure which is set out in the Gem-A Student Guide to Policies and Procedures. You will receive a copy of this when you enrol onto a course.

**Study visa:** Students intending to attend any of Gem-A's UK based on-site courses will need to ensure that they comply with the UK Government's requirements for studying in the UK, particularly if the applicant is applying from outside the U.K.

**Please note:** The UK Visas and Immigration Office regulations may be updated at any time and it is the applicant's responsibility to seek the current information relating to UK immigration rules. Enquiries can be made at the UK Visas and Immigration Office website or with their representative in the country in which the applicant resides.

**Language requirements:** There is a significant English language requirement for all students. Evidence is required to show that students who do not have English as a first language have passed a Secure English Language Test (SELT) at a minimum of CEFR level C1 (validity date is required). Examples of a SELT include IELTS Academic (level 7) or TOEFL (score 95–120). If it is found that the student subsequently can not keep up because of language deficiencies they are liable for withdrawal from the course following a period of consultation.

**Course levels:** By applying to one of Gem-A's courses the student is confirming that they understand and can comply with the study hours and academic levels required to do the course.

**Disability Support:** If you have any learning/health disabilities that you feel may require additional support for your studies or exam, or require special consideration for your exams please add this information to your application form or contact the Student Support and Welfare Officer. You will need to provide supporting, appropriate, documentary evidence, such as a statement of special educational need, a detailed letter from your doctor or any other relevant documentation.

**Additional conditions:** Our courses must be completed within two years of start date including attempting the exam. If the course is not completed within this time frame it will need to be re-started with full payment of the fees being required.

**Membership:** As a student you are required to adhere to the Terms and Conditions of Membership as outlined in the Memorandum and Articles of the Association, including passing a fit and proper person criteria. (Visit the Gem-A website to read these.)

**Exam entry:** Gem-A Theory exams are held in January and in June of each year. All exams are arranged internationally and you will be provided with information and dates when you enrol. Please ensure that you are prepared and available for your exam dates. Please note that all pre requisites for any examination must be fulfilled before sitting the examination. It is the responsibility of each individual student to ensure these requirements are met.

**Exam papers:** All Examination papers are the property of Gem-A. Answer papers are not returnable. Please do not telephone Gem-A for results as they will not be disclosed by telephone.

**Appeals:** Gem-A has an appeals procedure to allow for exceptional circumstances that can result in an approved change to its standard terms and conditions. In the first instance a student wishing to make an appeal should contact the Student Support and Welfare Officer, with as much supporting, third-party, documentary evidence as possible.

**By agreeing to these Terms and Conditions the applicant is confirming that they accept and will abide by them and that all information provided to Gem-A is both correct and honest.**

# EXAMINATIONS

## Exam entry

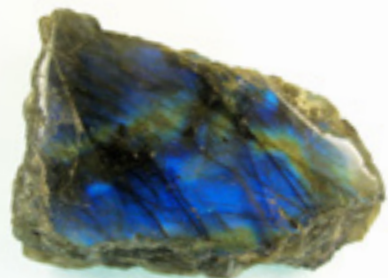
Examination dates are listed below. Students are automatically entered for the examination at the end of their course; it is the students responsibility to ensure they are available on their exam date. Students must complete an exam information form by 31 March for the June exams and 31 October for the January exams. Students are only allowed to withdraw from the examination for certain mitigating circumstances, as detailed in the examination information document sent to all candidates before the examinations. Resit students need to complete a resit exam entry form; the deadline for resit students is the 13 April for the June session and 13 November for the January session.

## Gem-A Theory Examination dates

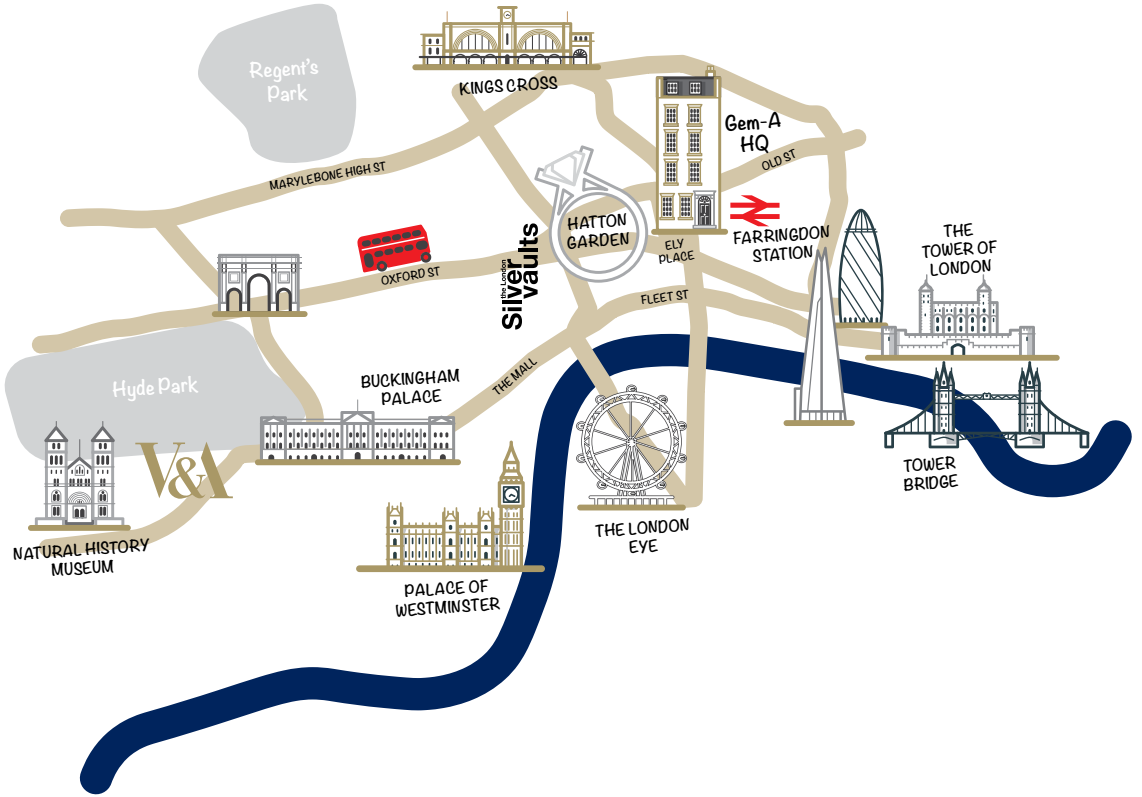
	January 2025	June 2025
Gemmology Foundation	21 January	23 June
Gemmology Diploma	22 January	24 June
Diamond Diploma	17 January	20 June

Practical examination dates vary from centre to centre. You will be notified of the date by Gem-A.

Feldspar,  
Labradorite.



# LOCATION



## Contact details

---

Gem-A  
21 Ely Place  
London  
EC1N 6TD  
UK

Telephone: +44 (0)207 404 3334  
Website; [www.gem-a.com](http://www.gem-a.com)  
Email: [information@gem-a.com](mailto:information@gem-a.com)





---

*Creating gemmologists since 1908*

The Gemmological Association of Great Britain, 21 Ely Place, London, EC1N 6TD, UK. T: +44 (0)20 7404 3334.  
Registered charity no. 1109555. A company limited by guarantee and registered in England No. 01945780.  
Registered Office: 16 Great Queen Street, Covent Garden, London, United Kingdom, WC2B 5AH.